

Third Week Enrollment Analysis Spring 2018

Page 1_{a,b} Highlights

Page 2: Enrollment Summary

Page 3: Headcount Enrollment Trend

Page 4: Credit Hour Trend

Page 5: Student Profile

Page 6: New/Continuing Students

Page 7: New Student Profile

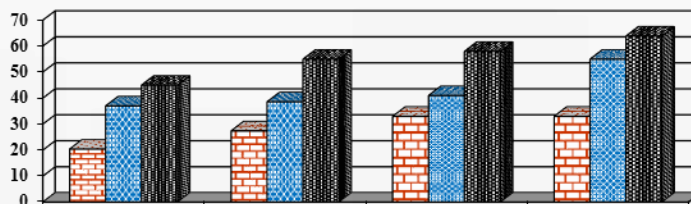
Page 8: Enrollment by Program

Page 9: Special Populations

Page 10: DCC South Enrollment Analysis

Page 11: DCC South Profile

Page 12: Reader Evaluation



3.1.18

*Dutchess Community College
Office of Institutional Research, Planning & Assessment*

Highlights

This report provides descriptive statistics and a trend analysis for the Spring 2018 enrollment at DCC. All comparisons are based on the Spring 2017 enrollment.

Key Points

DCC Overall (Undergraduates and High School Students combined)

- In Spring 2018, 7,415 students registered for credit courses at DCC, a decrease of 1.8% from Spring 2017 (7,550), (p.2). Total credit hour productivity (66,788) is down 3.4% from last spring (69,171). The current decrease reflects the decrease in enrollment that occurred in fall.
- The Spring 2018 full-time enrollment (3,122) is a decrease of 4.0% compared with full-time enrollment of Spring 2017 (3,251). Spring 2018 full time credit hours (43,727) are down 3.9% from Spring 2017 (45,509).
- Overall part-time headcount and credit hours are roughly level with last year, but the distribution of part-time enrollment has changed substantially. The part-time enrollment for Spring 2018 is down overall by .1% (4,293 vs. 4,299). On campus part-time enrollment is down 11.4% (2,059 vs. 2,324), while part-time concurrent enrollment is up 13.4% (2,219 vs. 1,957). Total part-time credit hours for Spring 2018 have decreased 2.5% (23,061 vs. 23,662). On campus part-time credits are down 10.6% (13,788 vs. 15,422), while part-time concurrent credits are up 12.7% (9,219 vs. 8,179).
- The average credits carried by full-time students is 14.01, an increase of .01 over last year. The part-time credit load for on campus students has increased by .9% to 6.70. The average credit load for part-time concurrent students has decreased by .6% to 4.15.

Undergraduate Students and High School Students

- Page 6, distinguishes the DCC campus population (Undergraduate students) from the concurrent high school population. When looking at the traditional DCC undergraduate population:
 - Overall, the number of undergraduate students in Spring 2018 (5,185 non-high school students) decreased by 6.8% from Spring 2017 (5,562).
 - Overall full-time enrollment decreased by 3.8%. A finer breakdown of the new student population reveals a 8.0% increase in first-time, full-time students this spring (162 vs. 150), and a 30.6% increase in full-time transfer students (141 vs. 108). The continuing population decreased by 5.7% (2,796 vs. 2,964).
 - Overall part-time undergraduate student enrollment (exclusive of high school students) indicates a decrease of 10.9% for Spring 2018. The continuing part-time population decreased by 11.3% (1,872 vs. 2,110). The part-time new and transfer population decreased by 7.0% (213 vs. 230).
 - The overall high school student headcount increased by 11.7% (2,219 vs. 1,986), (p.6).

Highlights

Student Profile and Curriculum Trends

- Among DCC's total student population, nearly 40% of the students identify themselves with a minority group (p.5). The New/Transfer undergraduate students (p.7), will continue to shift the diversity distribution of the on campus population over time, as 47% identify with a minority group. Gender distribution has remained relatively stable, with the overall female population at 55%, compared to a male population of 45%. Students 22 and under increased to 77% of the student population, a reflection of the concurrent high school program's impact on enrollment.
- Degree type information continues to reflect a shift between A.A.S. and A.S. programs in Spring 2018, (p.5). This change is a direct result of new students who want to enter the Nursing program and are now being matriculated into the General Studies program.
- The percent of students from Dutchess County has increased slightly to 75% overall. Enrollment from surrounding counties remains reasonably stable.
- Programs with the largest Spring 2018 enrollments are GSP (1,015), LAH (611), and BAT (544), (p.8). These same programs are the ones that received the most new full time students in Spring 2018: GSP (67), LAH (34) and BAT (26). Much of the increase in GSP enrollment continues to be a direct result of not allowing new full time students to enroll directly into the Nursing program unless very high standards are met.
- Most new students continue to matriculate into a program, (82%), (p.7)
- High Schools with the largest increases in concurrent credit hours taught were Millbrook, Stissing Mountain, Haldane, Spackenkill, Our Lady of Lourdes, Carmel, and Beacon.
- Based on 3rd Week data, enrollment at DCC South has decreased 17.9% to 1,026 students. DCC South generated 6,291 credit hours in Spring 2018 (p.10), a 12.2% decrease from Spring 2017. Average credits per student at DCC South (6.13) increased by 6.9%.
 - DCC South represented 9.4% of DCC's total credit hours, down from 10.4% in Spring 2017.

Enrollment Summary

	Spring 2018	Spring 2017	% Change
FT Headcount	3,122	3,251	-4.0%
FT Credit Hours	43,727	45,509	-3.9%
FT Avg. Credits/Student	14.01	14.00	0.1%
PT (Non-High School) Headcount	2,059	2,324	-11.4%
PT (Non-High School) Credit Hours	13,788	15,422	-10.6%
PT (Non-High School) Avg. Credits/Student	6.70	6.64	0.9%
PT Concurrent/H.S. Headcount	2,219	1,957	13.4%
PT Concurrent/H.S. Credit Hours	9,219	8,179	12.7%
PT Concurrent/H.S. Avg. Credits/Student	4.15	4.18	-0.6%
PT Senior Auditor Headcount	15	18	-16.7%
PT Senior Auditor Credit Hours	54	61	-11.5%
PT Senior Auditor Avg. Credits/Student	3.60	3.39	6.2%
Total Headcount	7,415	7,550	-1.8%
Total Credit Hours	66,788	69,171	-3.4%

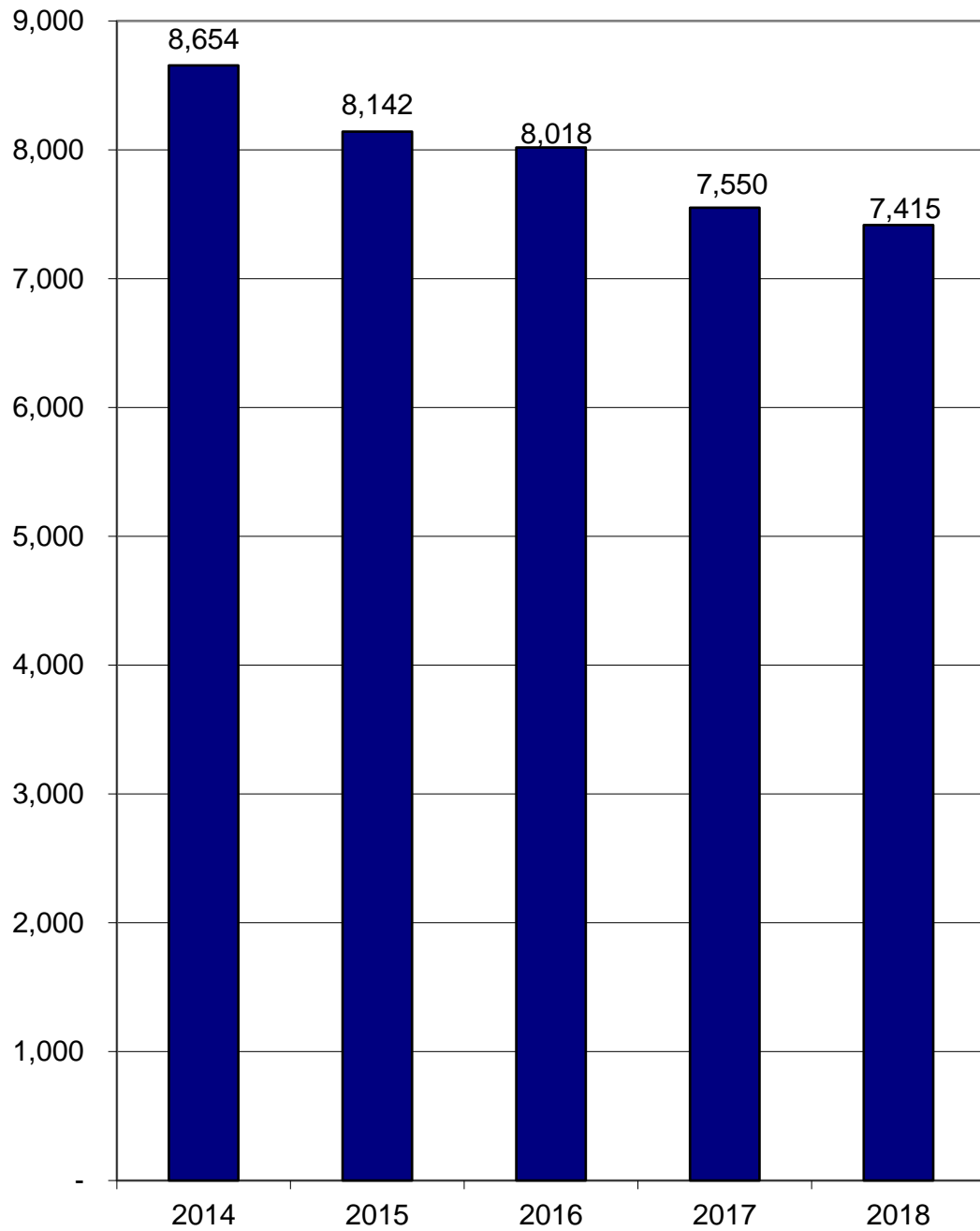
Source: 3rd week census data SOAYDTI download, 2-22-18

Office of Planning and Institutional Research, 2/26/18

y:\3rdweek\Spring 2018\enrollment summary.xls

Headcount Enrollment Trend

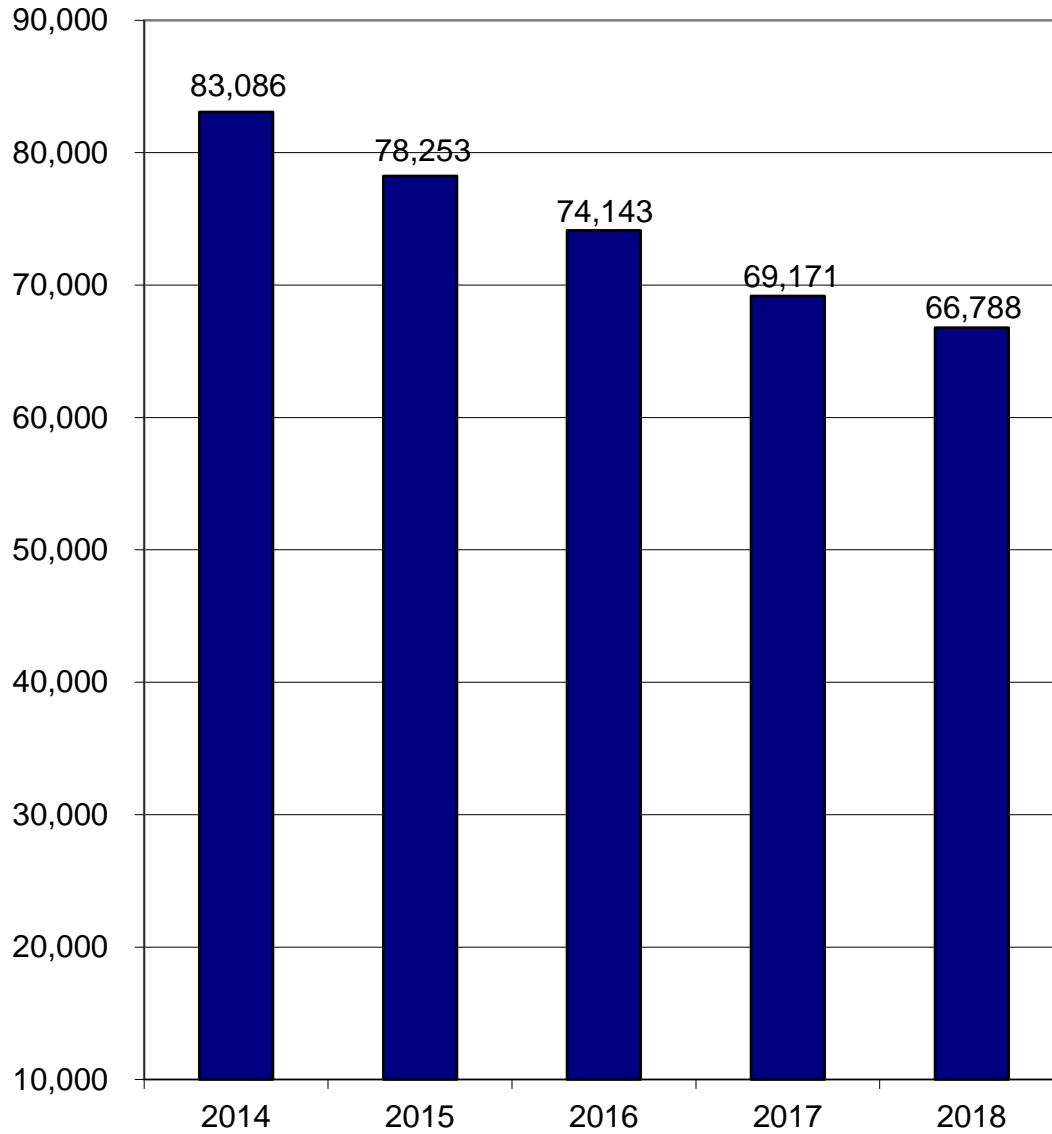
Spring 2014 - 2018



Source: 3rd week census data, ESS 2/22/18

Credit Hour Trend

Spring 2014- 2018



Student Profile

	Spring 2018				Spring 2017	
	Full-Time	Part-Time	Total	Percent	Total	Percent
Total Enrollment	3,122	4,293	7,415	100%	7,550	100%
<u>Gender</u>						
Male	1,547	1,800	3,347	45%	3,439	46%
Female	1,575	2,493	4,068	55%	4,111	54%
<u>Age</u>						
22 & under	2,622	3110	5,732	77%	5,770	76%
23-34	417	818	1,235	17%	1,281	17%
35-50	65	271	336	5%	376	5%
over 50	18	94	112	2%	122	2%
unknown	0	0	0	0%	1	0%
<u>Ethnicity</u>						
White	1,692	2,736	4,428	61%	4,582	62%
Black	464	404	868	12%	866	12%
Hispanic	700	757	1,457	20%	1,440	20%
Asian	86	160	246	3%	242	3%
Native American	9	2	11	0%	13	0%
Hawaiian or Other Pacific Islander	2	6	8	0%	6	0%
2 or More Ethnicity/Non-Hispanic	117	161	278	4%	253	3%
unknown	52	67	119	*	148	*
<u>Degree Type</u>						
A.A.	414	209	623	8%	814	11%
A.S.	2,325	1,145	3,470	47%	3,557	47%
A.A.S.	316	340	656	9%	783	11%
Certificate	31	63	94	1%	93	1%
Non-matriculated Undergraduates	13	340	353	5%	317	4%
High School Non-Matric	23	2,196	2,219	30%	1,986	26%
<u>County of Residence</u>						
Bronx	56	4	60	1%	79	1%
Dutchess	2,185	3,353	5,538	75%	5,620	74%
Orange	189	118	307	4%	306	4%
Putnam	169	600	769	10%	750	10%
Ulster	255	145	400	5%	435	6%
Westchester	80	22	102	1%	113	1%
other N.Y.	140	34	174	2%	269	3%
outside N.Y.S.	26	14	40	1%	32	0%
out of country	22	3	25	0%	46	0%

Due to rounding, percentages may not add to 100%

* Excluded from percentage calculations.

Office of Institutional Research, Planning & Assessment, 2/28/18

Source: 3rd week census data, SOAYDTI, 2/21/18

New/Continuing Students

	Spring 2018	Spring 2017	% Change
Total Headcount	7,404 **	7,548	-1.9%
<hr/>			
I. Undergraduate Students	5,185	5,562	-6.8%
A. Full-Time	3,099	3,222	-3.8%
1. New	303	258	17.4%
a. First-Time	162	150	8.0%
b. Transfer	141	108	30.6%
2. Continuing	2,796	2,964	-5.7%
B. Part-Time	2,086	2,340	-10.9%
1. New	214	230	-7.0%
a. First-Time	150	176	-14.8%
b. Transfer	64	54	18.5%
2. Continuing	1,872	2,110	-11.3%
<hr/>			
II. High School Students*	2,219	1,986	11.7%
A. Full-Time	23	29	-20.7%
B. Part-Time	2,196	1,957	12.2%

* student is currently enrolled in high school.

** Does not include cross registered students

Source: 3rd week census data, SOAYDTI 2/22/2018

Office of Planning & Institutional Research, 2/26/18

y:\3rdweek\spring 2018\new-continuing.xls

New/Transfer Student Profile*

	Spring 2018		Spring 2017		% Change
<u>Total Headcount</u>	516		486		6%
<u>Gender</u>					
Male	245	(47%)	232	(48%)	6%
Female	271	(53%)	254	(52%)	7%
<u>Age</u>					
22 & younger	341	(66%)	324	(67%)	5%
23-34	139	(27%)	124	(26%)	12%
35-50	25	(5%)	30	(6%)	-17%
over 50	11	(2%)	8	(1%)	38%
<u>Ethnicity</u>					
White	271	(55%)	246	(53%)	10%
Black	88	(18%)	86	(18%)	2%
Hispanic	107	(22%)	102	(22%)	5%
Asian	8	(2%)	9	(2%)	-11%
Native American	0	(0%)	1	(0%)	-100%
Hawaiian or Other Pacific Islander	0	(0%)	0	(0%)	-
2 or More Ethnicity/Non-Hispanic	23	(5%)	22	(5%)	5%
unknown	19	-	20	-	-5%
<u>Degree Type</u>					
A.A.	48	(9%)	46	(9%)	4%
A.S.	297	(58%)	255	(52%)	16%
A.A.S.	63	(12%)	81	(17%)	-22%
Certificate	16	(3%)	9	(2%)	78%
Non-matriculated	92	(18%)	95	(20%)	-3%
<u>County of Residence</u>					
Bronx	6	(1%)	9	(2%)	-33%
Dutchess	357	(69%)	311	(64%)	15%
Orange	38	(7%)	36	(7%)	6%
Putnam	25	(5%)	34	(7%)	-26%
Ulster	44	(9%)	49	(10%)	-10%
Westchester	12	(2%)	5	(1%)	140%
other N.Y.	27	(5%)	27	(6%)	0%
outside N.Y.S.	7	(1%)	10	(2%)	-30%
outside country	0	(0%)	5	(1%)	-100%

* note: does not include new high school students, includes transfer students.

Source: ESS file run 2/22/18

Office of Institutional Research, Planning & Assessment, 3/1/18

y:\3rdweek\spring 2018\new.xls

Enrollment by Program

	<u>Full-Time</u>	<u>Part-Time</u>	<u>2018 Total</u>	<u>2017 Total</u>	<u>1 Year % Change</u>	<u>Full-Time New*</u>
<u>ARTS & COMMUNICATIONS</u>	<u>287</u>	<u>111</u>	<u>398</u>	<u>442</u>	<u>-10%</u>	<u>22</u>
Art Studies Program (ASP)	2	1	3	15	-80%	0
Communications (COM)	124	47	171	205	-17%	9
Music Performance (Cert) (MPC)	0	0	0	4	-100%	0
Performing Arts (PFA)	60	16	76	70	9%	6
Visual Arts Transfer (VAT)	101	47	148	148	0%	7
<u>BUSINESS TECHNOLOGIES</u>	<u>484</u>	<u>279</u>	<u>763</u>	<u>773</u>	<u>-1%</u>	<u>45</u>
Accounting (ACC)	19	21	40	28	43%	2
Bookkeeping (Cert) (BOK)	1	6	7	6	17%	0
Bus Admin-Career (BUS)	53	65	118	127	-7%	9
Bus Admin-Transfer (BAT)	379	165	544	560	-3%	26
Paralegal (AAS) (PAL)	27	16	43	46	-7%	5
Paralegal (Cert) (PLL)	5	6	11	6	83%	3
<u>ENGINEERING, COMPUTER TECHNOLOGIES</u>	<u>254</u>	<u>119</u>	<u>373</u>	<u>423</u>	<u>-12%</u>	<u>29</u>
Air Conditioning & Refrig Tech (Cert) (ACR)	4	5	9	13	-31%	0
Architectural Technology (ARC)	38	10	48	43	12%	2
Aviation Science Pilot (AVI)	30	10	40	31	29%	0
Aviation Management (AVM)	11	2	13	8	63%	0
Computer Info Systems (CIS)	31	29	60	72	-17%	5
C++/Java Advanced Programming (Cert)(CJC)	0	1	1	-	-	0
Computer Networking (Cert) (CNC)	2	1	3	5	-40%	0
Computer Software Support (Cert) (SSC)	0	1	1	3	-67%	0
Web Administration (Cert) (WAC)	0	0	0	2	-100%	0
Information Management (INM)	38	11	49	46	7%	0
Construction Technology (CNS)	13	7	20	26	-23%	5
Electrical Technology (ELT)	20	18	38	50	-24%	6
Engineering Science (ENR)	67	24	91	124	-27%	11
<u>LIBERAL ARTS & SCIENCE</u>	<u>1,505</u>	<u>860</u>	<u>2,365</u>	<u>2,517</u>	<u>-6%</u>	<u>151</u>
Computer Science (CPS)	60	34	94	89	6%	9
Exercise Science & Wellness (ESW)	67	48	115	136	-15%	13
General Studies Program (GSP)	578	437	1,015	939	8%	67
Humanities & Social Sciences (LAH)	403	208	611	793	-23%	34
Mathematics (LAM)	11	1	12	21	-43%	0
Science (LAX)	204	75	279	321	-13%	16
Elementary Ed. birth-6 (EED)	106	29	135	115	17%	8
Childhood Education gr. 1-6 (EDC)	0	0	0	1	-100%	0
Adolescent Education gr.7-12 (EDB, EDX etc.)	76	28	104	102	2%	4
<u>HEALTH TECHNOLOGIES</u>	<u>81</u>	<u>159</u>	<u>240</u>	<u>304</u>	<u>-21%</u>	<u>14</u>
Emergency Medical Technician - paramedic (PAR)	16	11	27	33	-18%	5
Fire and Occupational Safety (FIR)	12	1	13	21	-38%	0
Fire Protection Technology (FPT)	7	5	12	7	71%	0
Medical Laboratory Technology (MLT)	30	16	46	43	7%	4
Nursing (NUR)	3	95	98	160	-39%	0
Paramedic(Cert)(PRR)	2	0	2	0	-	1
Phlebotomist (Cert) (PDC)	11	31	42	40	5%	4
<u>HUMAN SERVICES</u>	<u>474</u>	<u>229</u>	<u>703</u>	<u>788</u>	<u>-11%</u>	<u>41</u>
Chemical Dependency Counseling (Cert) (CDC)	3	5	8	8	0%	0
Child Care: Direct Care (Cert) (DRC)	2	4	6	4	50%	1
Child Care (CHC)	2	3	5	7	-29%	0
Criminal Justice-Public and Private Security (CRJ)	28	16	44	52	-15%	2
Criminal Justice- Transfer (AS) (CRT)	204	61	265	298	-11%	20
Early Childhood (ECH)	24	17	41	71	-42%	3
Early Childhood Caregiver (Cert) (ECC)	1	3	4	2	100%	0
Human Services (HMS)	205	109	314	328	-4%	15
Mental Health Assistant (CMH)	5	11	16	18	-11%	0
<u>NON-MATRICULATED UNDERGRADUATES</u>	<u>13</u>	<u>340</u>	<u>353</u>	<u>317</u>	<u>11%</u>	<u>1</u>
<u>HIGH SCHOOL NON-MATRICULATED</u>	<u>23</u>	<u>2,196</u>	<u>2,219</u>	<u>1,986</u>	<u>12%</u>	<u>0</u>
Total Enrollment	3,121	4,293	7,414	7,550	-1.8%	303

Source: 3rd week census data, 2/22/18

* new includes transfers

Enrollments: High Schools and Other Special Populations

Location	Sections Taught		Course Registrations		Credit Hours		% Change Credit Hours
	Spring 2018	Spring 2017	Spring 2018	Spring 2017	Spring 2018	Spring 2017	
<u>High Schools:</u>							
Arlington High School	19	19	499	457	1,341	1,371	-2%
Beacon High School	10	10	194	162	582	486	20%
Brewster High School	3	-	71	-	213	-	-
Carmel High School	20	14	406	326	1,218	978	25%
Dover High School	4	3	73	71	219	213	3%
Faith Christian Academy	1	1	10	16	30	48	-38%
Franklin D. Roosevelt High School	10	9	184	182	552	546	1%
Haldane High School	3	1	56	18	114	72	58%
John Jay High School	15	15	329	332	1,035	1,048	-1%
Mahopac High School	3	3	58	56	174	168	4%
Millbrook High School	4	2	67	33	238	117	103%
Our Lady of Lourdes High School	13	10	309	218	927	654	42%
Pawling High School	1	1	10	22	30	66	-55%
Poughkeepsie High School	3	2	40	34	120	102	18%
Putnam Valley High School	3	4	55	62	190	216	-12%
Red Hook High School	1	1	9	16	27	48	-44%
Roy C. Ketcham High School	17	16	362	378	1,110	1,185	-6%
Spackenkill High School	5	3	106	68	362	245	48%
Stissing Mountain High School	3	3	43	43	140	148	65%
Webutuck High School	4	1	80	24	244	72	239%
Sub-total: High School	142	118	2,961	2,518	8,866	7,783	14%
<u>Other:</u>							
P-Tech Poughkeepsie High School	2	3	14	49	18	85	-79%
Sub-total: Other	2	3	14	49	18	85	-79%
Total: High Schools and Other Special Populations	144	121	2,975	2,567	8,884	7,868	13%

note: as of the 3rd week, not all registrations were in the system.

Sources: High School counts from billing spreadsheet from Academic Affairs; P-Tech counts from Argos ST00210 - Course section report for IR

DCC South Enrollment Analysis

	Spring 2018	Spring 2017	% Change
Total Sections Offered at DCC South	109	117	-7%
# Students Taking at least one Course at DCC South	1,026	1,249	-17.9%
# Students Taking Courses at both DCC South and on campus	653	811	-19.5%
Total Credit Hours Generated at DCC South	6,291	7,167	-12.2%
Average Credits per student at DCC South	6.13	5.74	6.9%
% of total DCC credits generated at DCC South	9.4%	10.4%	

Source: 3rd week census data Argos ST0033, section total: ST0097, 2/26/18
 Office of Institutional Research, Planning & Assessment, 2/26/18
 y:\3rdweek\spring 2018\dcc south sections.xls

DCC South Profile

Students Taking Courses at DCC South

	Spring 2018		Spring 2017		% Change
<u>All Students</u>	1,026		1,249		-17.9%
<u>Gender</u>					
Male	484	(47%)	563	(45%)	-14%
Female	542	(53%)	686	(55%)	-21%
<u>Age</u>					
22 & under	702	(68%)	823	(80%)	-15%
23-34	233	(23%)	309	(25%)	-25%
35-50	65	(6%)	94	(7%)	-31%
over 50	26	(3%)	23	(2%)	13%
<u>Ethnicity</u>					
White	613	(60%)	763	(62%)	-20%
Black	121	(12%)	130	(11%)	-7%
Hispanic	218	(21%)	266	(22%)	-18%
Asian	24	(2%)	28	(2%)	-14%
Native American	0	(0%)	1	(0%)	-100%
Hawaiian or Other Pacific Islander	1	(0%)	0	(0%)	-
2 or More Ethnicity/Non-Hispanic	37	(4%)	41	(3%)	-10%
unknown	12	*	20	*	*
<u>Degree Type</u>					
A.A.	136	(13%)	177	(17%)	-23%
A.S.	705	(69%)	830	(67%)	-15%
A.A.S.	102	(10%)	154	(15%)	-34%
certificate	12	(1%)	14	(1%)	-14%
non-matriculated	67	(7%)	60	(6%)	12%
high school non-matriculated	4	(0%)	14	(1%)	-71%
<u>County of Residence</u>					
Dutchess	832	(81%)	1,011	(81%)	-18%
Orange	56	(5%)	72	(6%)	-22%
Putnam	76	(7%)	94	(8%)	-19%
Ulster	40	(4%)	46	(4%)	-13%
other N.Y.	20	(2%)	18	(1%)	11%
outside N.Y.S.	2	(0%)	6	(0%)	-67%
out of country	0	(0%)	2	(0%)	-

* excluded from percentage calculations.

Source: 3rd week census data Argos ST0033, 2/22/18

Office of Institutional Research, Planning & Assessment, 3/1/18

y:\3rdweek\spring 2018\DCC South Profile.xls

Reader Comment Form

The Office of Institutional Research, Planning and Assessment wants to evaluate the usefulness of its publications, and therefore we ask that you take a few minutes to give us your impressions of the Third Week Enrollment Analysis. Your comments will be used to help modify future publications in order to meet your needs. Please answer the questions below and return the survey via campus mail to the Office of Planning and Institutional Research. All responses are confidential.

1. To what extent was the information presented in the Third Week Enrollment Analysis useful to you?

Not Useful		Somewhat Useful		Very Useful
1	2	3	4	5

2. Please briefly describe the purposes for which you use/will use the information in the Third Week Enrollment Analysis.

3. How would you rate the clarity of the following items within the Third Week Enrollment Analysis?

	Not Clear		Somewhat Clear		Very Clear
Graphs	1	2	3	4	5
Data Tables	1	2	3	4	5
Overall Presentation	1	2	3	4	5

4. How can the Third Week Enrollment Analysis be improved? (Format, graphs, new information, etc.)

Please return to *Planning & Institutional Research*. Thank you for your time and effort.