

Third Week Enrollment Analysis Fall 2019

Page 1a,b Highlights

Page 2: Enrollment Summary

Page 3: Headcount Enrollment Trend

Page 4: Credit Hour Trend

Page 5: Student Profile

Page 6: New/Continuing Students

Page 7: New Student Profile

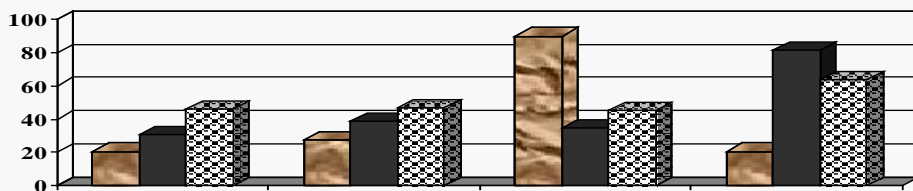
Page 8: Enrollment by Program

Page 9: Special Populations

Page 10: DCC South Enrollment Analysis

Page 11: DCC South Profile

Page 12: Reader Evaluation



10.25.19

*Dutchess Community College
Office of Institutional Research, Planning & Assessment*

Highlights: Fall 2019 Enrollment Trends

This report provides descriptive statistics and trend analysis of the Fall 2019 enrollment at Dutchess Community College, as compared to Fall 2018.

- In Fall 2019, DCC overall headcount increased 1.1% from Fall 2018 (8,728 vs. 8,632). Full-time enrollment decreased 4.4% (3,516 vs. 3,678) and part-time enrollment increased 5.2% (5,212 vs. 4,954). Concurrent students now make up 60% of the DCC part-time population, and represent 38% of the overall headcount for Fall 2019. New full-time student enrollment dropped by 8.3% (1,533 vs. 1,671). New part-time enrollment decreased by 7.9% (374 vs. 406). Continuing student enrollment decreased by 4.0% for full-time students (1,817 vs. 1,892), and increased by .2% for part-time students (1,696 vs. 1,693).
- Full-time transfer enrollment decreased by 23.9% (159 vs. 209) and part-time transfer student enrollment decreased by 6 (73 vs. 79). Concurrent student enrollment increased by 11.2% (3,273 vs. 2,944).
- Overall credit hours decreased 1.1% (78,853 vs. 79,734). Full-time credit hours decreased by 4.9% (49,137 vs. 51,646). Part-time non-high school student credit hours decreased by .7% (14,050 vs. 14,154) and part-time high school student credit hours increased by 12.5% (15,601 vs. 13,863).
- The overall number of part-timers (5,212) continues to exceed full-timers (3,516). But, when those numbers are adjusted to exclude the concurrently enrolled high school students, full-time students make up 62% of the on-campus population.
- Among full-time students, 41% are first-time college students in Fall 2019.
- More women (56%) than men (44%) attend DCC. Among new and transfer students 54% were women.
- The age demographic of the College has been impacted by the continuous growth in the concurrent high school program. The percentage of students age 22 and under is 80% in Fall 2019, as 86% of the new and transfer students were 22 or younger.
- The percentage of minority students being served is 41%, up 1% over last year. The new/transfer population of minority students is 47% in Fall 2019, up 3% compared to Fall 2018.
- The most popular type of degree sought by new/transfer students is the A.S. (71%), followed by both the A.A.S. (11%) and A.A. (11%). The overall number of students in A.A. programs declined 15% compared to last year (509 vs. 598) while the number of students in certificate programs increased 10% (86 vs. 78).

The number of students pursuing the A.S. declined 1.3% (3,657 vs. 3,775). The number of non-matriculated students declined by 3.8% (434 vs. 451).

- The General Studies program has the highest number of matriculated students of any DCC program with 1,250, a 3% increase over last year. The second largest is the Humanities and Social Science program with 509, a decline of 13% compared to last year. The Business-Transfer program is the third largest with 488 students, an 8% decline compared to last year. Combined these 3 programs represent 45% of all matriculated DCC students. The new Public Health program has 10 students, 5 of which are new to the college.
- The General Studies program had the largest headcount increase in enrollment (+36 students) and the Engineering Science program had the largest percentage increase (13%). Enrollment in the Paralegal program declined by 44% (28 vs. 50) and enrollment in the deactivated Information Management program declined by 57% (23 vs. 54). Other programs with significant declines include Humanities and Social Science (-13%), Exercise Science and Wellness (-17%), and Elementary Education (-14%).
- Associate degree programs that are experiencing growth in new, full-time students are: the General Studies Program (+19), Science (+19), Business Administration – Transfer (+19), Elementary Education (+14), and Architectural Technology (+9). Those experiencing significant declines include Communication (-33), Humanities and Social Science (-21), Exercise Science and Wellness (-20), Visual Arts – Transfer (-17), Information Management (-17, program deactivated), Computer Science (-16), Criminal Justice – Transfer (-12) and Criminal Justice – Security (-12).
- Arlington (+1,351) and John Jay (+861) significantly increased the number of credits taken by concurrent students. Millbrook (-108) had no concurrent credits this Fall as they moved to the International Baccalaureate.
- In Fall 2019, Dutchess South enrollment declined significantly both in terms of students taking at least one credit at DCC South (-11.2%) and in the number of credit hours generated at DCC South (-13.8%).
 - Dutchess South generated 9.0% of all of DCC's credit hours, down from 10.3% last year.
 - 114 sections are being taught at DCC South during Fall 2019 compared to 131 last year.

The data reported herein typically reflects student enrollment status at DCC as of the 3rd week of the semester. The Fall 2019 data was collected on October 23, 2019. Additional add/drop or registration activity might occur and/or be processed, which will impact the official census enrollment figures.

Enrollment Summary

	Fall 2019	Fall 2018	% Change
FT Headcount	3,516	3,678	-4.4%
FT Credit Hours	49,137	51,646	-4.9%
FT Avg. Credits/Student	13.98	14.04	-0.5%
PT (Non-High School) Headcount	2,077	2,103	-1.2%
PT (Non-High School) Credit Hours	14,050	14,154	-0.7%
PT (Non-High School) Avg. Credits/Student	6.76	6.73	0.5%
PT Concurrent/H.S. Headcount	3,107	2,829	9.8%
PT Concurrent/H.S. Credit Hours	15,601	13,863	12.5%
PT Concurrent/H.S. Avg. Credits/Student	5.02	4.90	2.5%
PT Senior Auditor Headcount	28	22	27.3%
PT Senior Auditor Credit Hours	65	71	-8.5%
PT Senior Auditor Avg. Credits/Student	2.32	3.23	-28.1%
Total Headcount	8,728	8,632	1.1%
Total Credit Hours	78,853	79,734	-1.1%

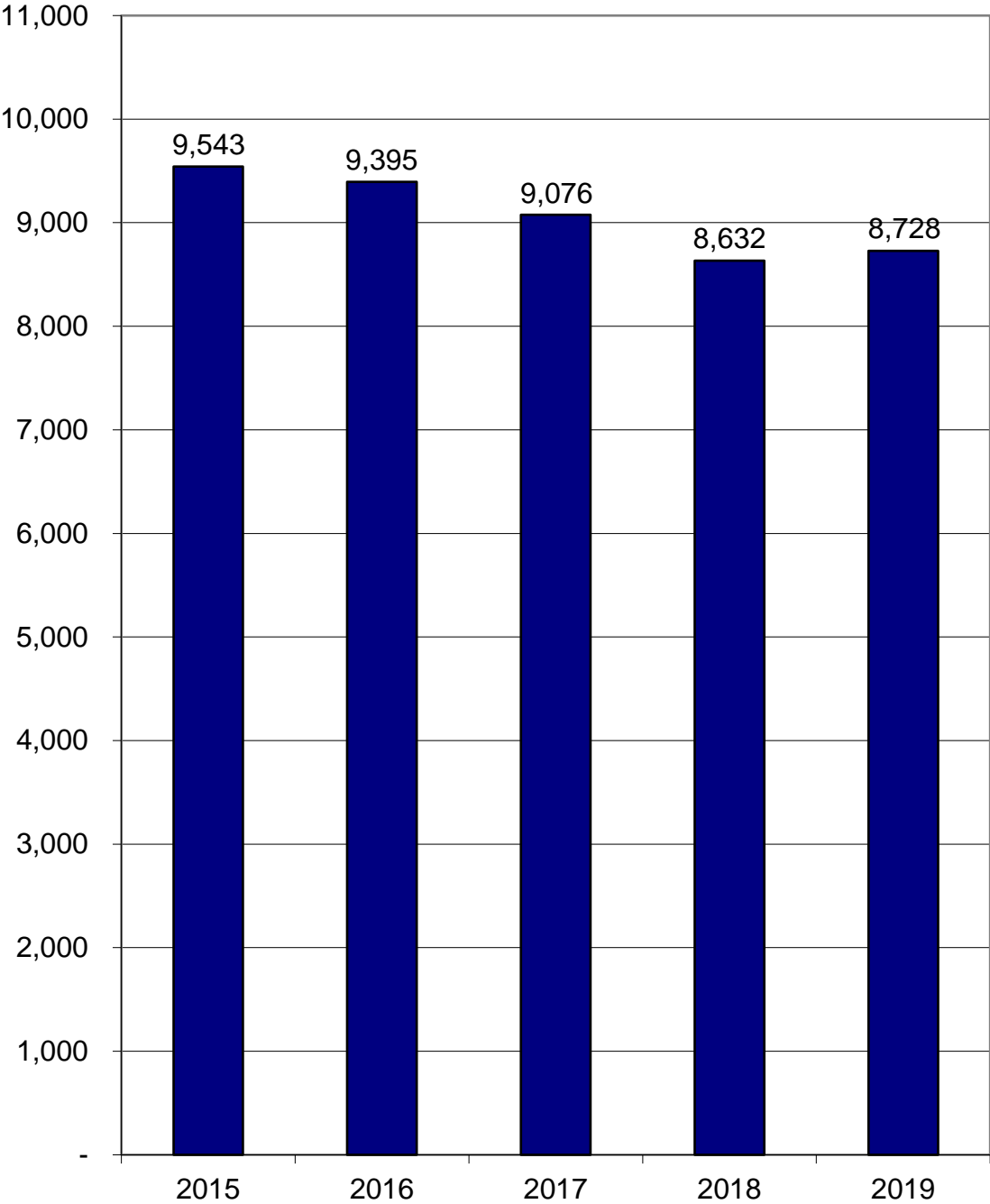
Source: 3rd week census data SOAYDTI download, 10-22-19

Office of Planning and Institutional Research, 10/24/19

y:\3rdweek\Fall2019\enrollment summary.xls

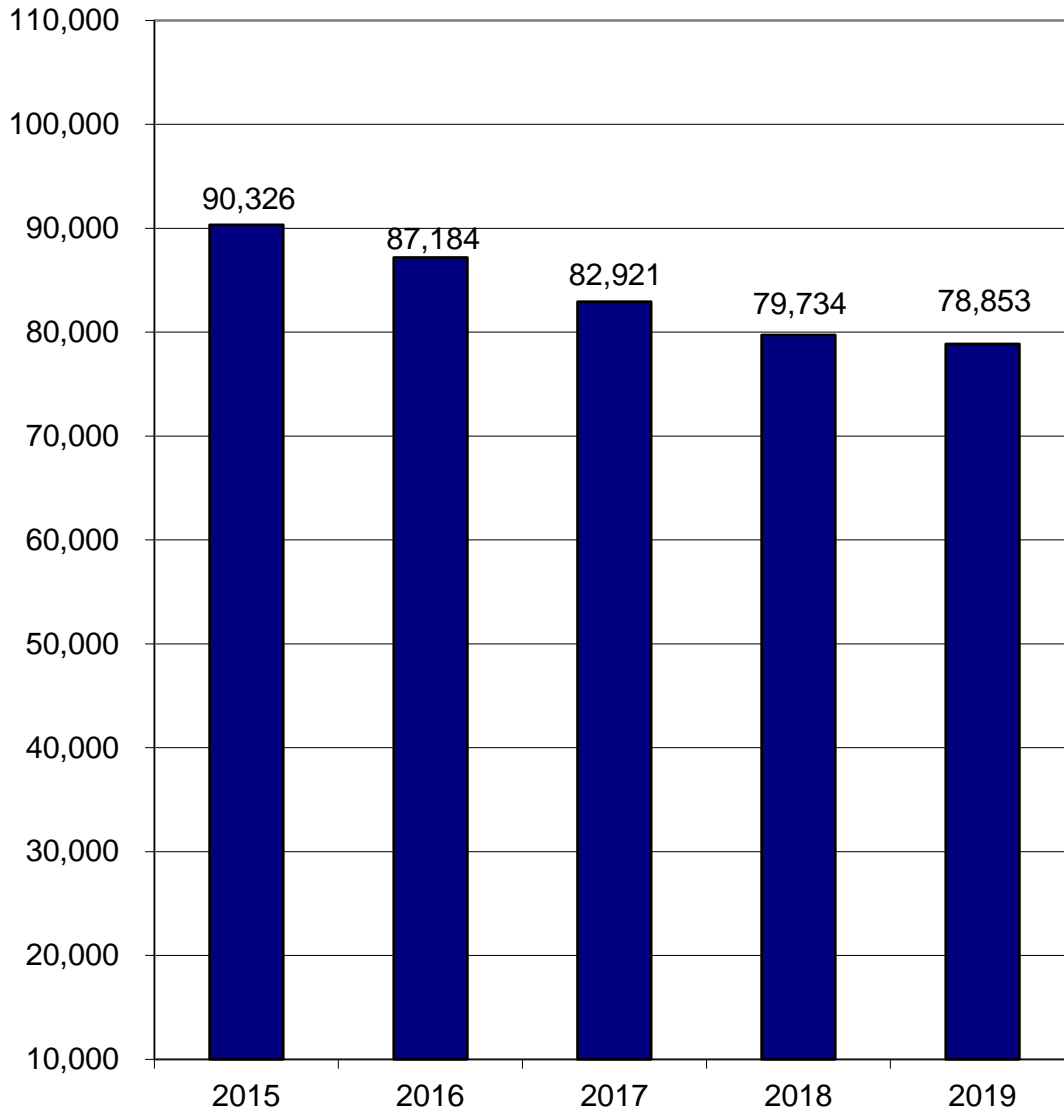
Headcount Enrollment Trend

Fall 2015- 2019



Credit Hour Trend

Fall 2015 - 2019



Student Profile

	Fall 2019				Fall 2018	
	Full-Time	Part-Time	Total	Percent	Total	Percent
Total Enrollment	3,516	5,212	8,728	100%	8,632	100%
<u>Gender</u>						
Male	1,695	2,184	3,879	44%	3,909	45%
Female	1,821	3,028	4,849	56%	4,723	55%
<u>Age</u>						
22 & Under	3,009	4,011	7,020	80%	6,883	80%
23-34	395	839	1,234	14%	1,286	15%
35-50	85	258	343	4%	342	4%
over 50	27	104	131	2%	121	1%
<u>Ethnicity</u>						
White	1,867	3,111	4,978	59%	5,054	60%
Black	480	460	940	11%	898	11%
Hispanic	797	1,046	1,843	22%	1,817	22%
Asian	93	218	311	4%	293	3%
Native American	7	11	18	0%	13	0%
Hawaiian or Other Pacific Islander	2	3	5	0%	7	0%
2 or More Ethnicity/Non-Hispanic	172	201	373	4%	345	4%
unknown	98	162	260	*	205	*
<u>Degree Type</u>						
A.A.	351	158	509	6%	598	7%
A.S.	2,575	1,082	3,657	42%	3,775	44%
A.A.S.	385	384	769	9%	786	9%
Certificate	25	61	86	1%	78	1%
non-matriculated undergraduate	14	420	434	5%	451	5%
high school non-matric	166	3,107	3,273	38%	2,944	34%
<u>County of Residence</u>						
Dutchess	2,634	3,960	6,594	76%	6,353	74%
Orange	249	118	367	4%	348	4%
Putnam	181	894	1,075	12%	1,135	13%
Ulster	240	158	398	5%	404	5%
Westchester	73	22	95	1%	119	1%
New York City**	56	13	69	1%	113	1%
other N.Y.	63	38	101	1%	99	1%
outside N.Y.S.	6	9	15	0%	26	0%
out of country	14	0	14	0%	35	0%

* Excluded from percentage calculations.

** Bronx, Kings, Manhattan, Queens, Richmond

Note: County is based on County Chargeback records.

Source: 3rd week census data ESS SOAYDTI 10/22/19

Office of Planning & Institutional Research, 10/25/19

y:\3rdweek\fall 2019\Student Profile fall.xls

New/Continuing Students

	Fall 2019	Fall 2018	% Change
Total Headcount	8,728	8,632	1.1%
<hr/>			
I. Undergraduate Student	5,420	5,662	-4.3%
A. Full-Time	3,350	3,563	-6.0%
1. New	1,533	1,671	-8.3%
a. First-Time	1,374	1,462	-6.0%
b. Transfer	159	209	-23.9%
2. Continuing	1,817	1,892	-4.0%
B. Part-Time	2,070	2,099	-1.4%
1. New	374	406	-7.9%
a. First-Time	301	327	-8.0%
b. Transfer	73	79	-7.6%
2. Continuing	1,696	1,693	0.2%
<hr/>			
II. High School Students*	3,273	2,944	11.2%
A. Full-Time	166	115	44.3%
B. Part-Time	3,107	2,829	9.8%
III. Senior Auditors			
A. Part-Time	28	22	27.3%
IV. Cross Registered			
A. Part-Time	7	4	75.0%

* student is currently enrolled in high school.

Source: 3rd week census data, SOAYDTI 10/22/19

Office of Planning & Institutional Research

y:\3rdweek\fall 2019\new-cont Rev2.xls 10/24/19

New/Transfer Student Profile*

	Fall 2019		Fall 2018		% Change
<u>Total Headcount</u>	1,907		2,077		-8%
<u>Gender</u>					
Male	883	(46%)	1,004	(48%)	-12%
Female	1,024	(54%)	1,073	(52%)	-5%
<u>Age</u>					
22 & younger	1,645	(86%)	1,791	(86%)	-8%
23-34	176	(9%)	205	(10%)	-14%
35-50	66	(4%)	62	(3%)	6%
over 50	19	(1%)	19	(1%)	0%
<u>Ethnicity</u>					
White	941	(53%)	1,103	(56%)	-15%
Black	269	(15%)	282	(14%)	-5%
Hispanic	447	(25%)	447	(23%)	0%
Asian	36	(2%)	45	(2%)	-20%
Native American	3	(0%)	3	(0%)	0%
Hawaiian or Other Pacific Islander	3	(0%)	-	(0%)	-
2 or More Ethnicity/Non-Hispanic	81	(5%)	86	(4%)	-6%
unknown	127	*	111	*	14%
<u>Degree Type</u>					
A.A.	206	(11%)	226	(11%)	-9%
A.S.	1,352	(71%)	1,419	(68%)	-5%
A.A.S.	201	(11%)	241	(12%)	-17%
Certificate	21	(1%)	24	(1%)	-13%
Non-matriculated	127	(7%)	167	(8%)	-24%
<u>County of Residence</u>					
Dutchess	1,376	(72%)	1,500	(72%)	-8%
Orange	151	(8%)	126	(6%)	20%
Putnam	104	(5%)	122	(6%)	-15%
Ulster	129	(7%)	151	(7%)	-15%
Westchester	50	(3%)	59	(3%)	-15%
New York City **	39	(2%)	48	(2%)	-19%
other N.Y.	45	(2%)	51	(3%)	-12%
outside N.Y.S.	12	(1%)	16	(1%)	-25%
out of country***	1	(0%)	4	(0%)	-75%

* note: does not include new high school students or new senior auditors, includes transfer students.

** Bronx, Kings, Manhattan, Queens, Richmond

*** F1 Visa

Source: 3rd week census data, SOAYDTI 10-22-19

Note: County is based on County Chargeback records

Office of Institutional Research, Planning & Assessment

y:\3rdweek\fall2019\new.xls, 10/25/19

Enrollment by Program

	<u>Full-Time</u>	<u>Part-Time</u>	<u>2019 Total</u>	<u>2018 Total</u>	<u>1 Year % Change</u>	<u>FT New*</u>
<u>ARTS & COMMUNICATIONS</u>	<u>301</u>	<u>114</u>	<u>415</u>	<u>429</u>	<u>-3%</u>	<u>109</u>
Art Studies Program (ASP)	0	0	0	1	-100%	-
Communications (COM)	114	48	162	175	-7%	35
Music Performance (Cert) (MPC)	2	1	3	0	-	1
Visual Arts Transfer (VAT)	119	51	170	172	-1%	49
Performing Arts (PFA)	66	14	80	81	-1%	24
<u>BUSINESS TECHNOLOGIES</u>	<u>479</u>	<u>240</u>	<u>719</u>	<u>777</u>	<u>-7%</u>	<u>195</u>
Accounting (ACC)	26	20	46	44	5%	5
Bookkeeping (Cert) (BOK)	0	4	4	2	100%	-
Bus Admin-Career (BUS)	70	72	142	143	-1%	34
Bus Admin-Transfer (BAT)	360	128	488	529	-8%	154
Paralegal (AAS) (PAL)	20	8	28	50	-44%	2
Paralegal (Cert) (PLL)	3	8	11	9	22%	-
<u>ENGINEERING, COMPUTER TECHNOLOGIES</u>	<u>261</u>	<u>113</u>	<u>374</u>	<u>384</u>	<u>-3%</u>	<u>117</u>
Air Conditioning & Refrig Tech (Cert) (ACR)	2	6	8	2	300%	2
Architectural Technology (ARC)	46	6	52	47	11%	22
Aviation Science Pilot (AVI)	32	1	33	42	-21%	18
Aviation Management (AVM)	8	2	10	9	11%	1
Computer Info Systems (CIS)	40	26	66	63	5%	18
C++/Java Advanced Programming (Cert)(CJC)	0	0	0	1	-100%	-
Computer Networking (Cert) (CNC)	0	3	3	5	-40%	-
Computer Software Support (Cert) (SSC)	0	0	0	1	-100%	-
Web Administration (Cert) (WAC)	1	2	3	0	-	1
Construction Technology (CNS)	19	8	27	25	8%	8
Electrical Technology (ELT)	22	25	47	45	4%	14
Engineering Science (ENR)	74	28	102	90	13%	33
Information Management (INM)	17	6	23	54	-57%	-
<u>LIBERAL ARTS & SCIENCE</u>	<u>1,685</u>	<u>799</u>	<u>2,484</u>	<u>2,583</u>	<u>-4%</u>	<u>857</u>
Computer Science (CPS)	72	27	99	109	-9%	36
Exercise Science & Wellness (ESW)	66	28	94	113	-17%	28
General Studies Program (GSP)	802	448	1,250	1,214	3%	413
Humanities & Social Sciences (LAH)	351	158	509	586	-13%	173
Mathematics (LAM)	10	3	13	12	8%	3
Science (LAX)	193	75	268	286	-6%	114
Elementary Ed. birth-6 (EED)	112	39	151	147	3%	57
Adolescent Education gr.7-12 (EDB, EDX etc.)	79	21	100	116	-14%	33
<u>HEALTH TECHNOLOGIES</u>	<u>73</u>	<u>206</u>	<u>279</u>	<u>282</u>	<u>-1%</u>	<u>27</u>
Emergency Medical Technician - paramedic (PAR)	18	10	28	36	-22%	8
Fire and Occupational Safety (FIR)	4	4	8	15	-47%	2
Fire Protection Technology (FPT)	11	8	19	24	-21%	3
Medical Laboratory Technology (MLT)	19	32	51	50	2%	5
Nursing (NUR)	0	123	123	112	10%	-
Public Health (PBH)	7	3	10	new	-	5
Paramedic (Cert) (PRR)	2	6	8	7	-	1
Phlebotomist (Cert) (PDC)	12	20	32	38	-16%	3
<u>HUMAN SERVICES</u>	<u>537</u>	<u>213</u>	<u>750</u>	<u>782</u>	<u>-4%</u>	<u>227</u>
Chemical Dependency Counseling (Cert) (CDC)	2	7	9	11	-18%	-
Child Care: Direct Care (Cert) (DRC)	0	3	3	2	50%	-
Child Care (CHC)	2	2	4	8	-50%	1
Criminal Justice- Public and Private Security (AAS)(CRJ)	47	18	65	68	-4%	19
Criminal Justice- Transfer (AS) (CRT)	231	53	284	287	-1%	103
Early Childhood (ECH)	25	17	42	49	-14%	13
Early Childhood Caregiver (Cert) (ECC)	1	1	2	1	100%	-
Human Services (HMS)	219	106	325	337	-4%	85
Mental Health Assistant (CMH)	10	6	16	19	-16%	6
<u>NON-MATRICULATED</u>	<u>14</u>	<u>420</u>	<u>434</u>	<u>451</u>	<u>-4%</u>	<u>1</u>
<u>HIGH SCHOOL NON-MATRICULATED</u>	<u>166</u>	<u>3,107</u>	<u>3,273</u>	<u>2,944</u>	<u>11%</u>	
Total Enrollment	3,516	5,212	8,728	8,632	1%	1,533

Enrollments: High Schools and Other Special Populations

Location	Sections Taught		Course Registrations		Credit Hours		% Change Credit Hours
	Fall 2019	Fall 2018	Fall 2019	Fall 2018	Fall 2019	Fall 2018	
<u>High Schools:</u>							
Arlington High School	42	23	958	511	3,003	1,652	82%
Beacon High School	20	17	407	347	1,286	1,110	16%
Brewster High School	3	3	70	53	210	159	32%
Carmel High School	30	27	622	572	2,084	1,907	9%
Dover High School	8	9	131	138	393	456	-14%
Faith Christian Academy	3	3	41	32	151	112	35%
Franklin D. Roosevelt High School	7	10	153	206	459	618	-26%
Haldane High School	9	12	122	202	385	630	-39%
John Jay High School	32	18	731	447	2,398	1,537	56%
Mahopac High School	12	12	247	263	879	930	-5%
Millbrook High School	0	2	0	36	0	108	-100%
Our Lady of Lourdes High School	28	26	607	606	1,986	2,001	-1%
Pawling High School	2	2	31	20	93	60	55%
Poughkeepsie High School	5	4	90	64	270	192	41%
Putnam Valley High School	8	9	142	179	505	648	-22%
Red Hook High School	2	2	36	39	144	135	7%
Rhinebeck High School	1	2	12	40	36	120	-70%
Roy C. Ketcham High School	23	22	569	538	1,860	1,739	7%
Spackenkill High School	8	11	182	221	597	736	-19%
Stissing Mountain High School	4	4	71	70	227	210	8%
Webutuck High School	7	5	89	47	291	149	95%
Sub-total:	254	223	5311	4,631	17,257	15,209	13%
Other:							
Marist College	0	1	0	13	0	78	-100%
Total: High Schools and Other Populations	254	224	5,311	4,644	17,257	15,287	13%

note: as of the 3rd week, not all registrations were in the system.

DCC South Enrollment Analysis

	Fall 2019	Fall 2018	% Change
Total Sections Offered at DCC South	114	131	-13.0%
# Students Taking Courses at DCC South	1,105	1,245	-11.2%
Total Credit Hours Generated at DCC South	7,091	8,223	-13.8%
Average Credits/Student	6.4	6.6	-2.8%
% of total DCC credits generated at DCC South	9.0%	10.3%	-12.8%

Source: 3rd week census data, ST033 10/24/19, ST0098 10/24/19
Office of Planning & Institutional Research, 10/24/19
y:\3rdweek\fall 2019\dccsosect.xls

DCC South Profile

Students Taking Courses at DCC South

	Fall 2019		Fall 2018		% Change
<u>All Students</u>	1,105		1,245		-11%
<u>Gender</u>					
Male	480	(43%)	580	(47%)	-17%
Female	625	(57%)	665	(53%)	-6%
<u>Age</u>					
22 & under	775	(70%)	862	(69%)	-10%
23-34	226	(20%)	270	(22%)	-16%
35-50	71	(6%)	82	(7%)	-13%
over 50	33	(3%)	31	(2%)	6%
<u>Ethnicity</u>					
White	625	(58%)	697	(57%)	-10%
Black	110	(10%)	131	(11%)	-16%
Hispanic	265	(25%)	317	(26%)	-16%
Asian	20	(2%)	33	(3%)	-39%
Native American	2	(0%)	1	(0%)	100%
Hawaiian or Other Pacific Islander	2	(0%)	1	(0%)	100%
2 or More Ethnicity/Non-Hispanic	52	(5%)	42	(3%)	24%
unknown	29	*	23	*	*
<u>Degree Type</u>					
A.A.	93	(8%)	132	(11%)	-30%
A.S.	771	(70%)	853	(69%)	-10%
A.A.S.	131	(12%)	157	(13%)	-17%
Certificate	20	(2%)	12	(1%)	67%
non-matriculated undergraduate	79	(7%)	88	(7%)	-10%
high school non-matric	11	(1%)	3	(0%)	267%
<u>County of Residence</u>					
Dutchess	921	(83%)	1,034	(83%)	-11%
Orange	56	(5%)	56	(5%)	0%
Putnam	65	(6%)	85	(7%)	-24%
Ulster	33	(3%)	36	(3%)	-8%
other N.Y.	29	(3%)	30	(2%)	-3%
outside N.Y.S.	1	(0%)	4	(0%)	-75%
outside country	0	(0%)	0	(0%)	-

* excluded from percentage calculations.

Note: County is based on County Chargeback records.

Source: 3rd week census data ST033 10/24/19

Office of Planning and Institutional Research, 10/25/19

y:\3rdweek\fall2018\DCCSOprofile.xls

Reader Comment Form

The Office of Institutional Research, Planning and Assessment wants to evaluate the usefulness of its publications, and therefore we ask that you take a few minutes to give us your impressions of the Third Week Enrollment Analysis. Your comments will be used to help modify future publications in order to meet your needs. Please answer the questions below and return the survey via campus mail to the Office of Institutional Research, Planning and Assessment. All responses are confidential.

1. To what extent was the information presented in the Third Week Enrollment Analysis useful to you?

Not Useful			Somewhat Useful		Very Useful
1	2	3	4	5	

2. Please briefly describe the purposes for which you use/will use the information in the Third Week Enrollment Analysis.

3. How would you rate the clarity of the following items within the Third Week Enrollment Analysis?

	Not Clear		Somewhat Clear		Very Clear
Graphs	1	2	3	4	5
Data Tables	1	2	3	4	5
Overall Presentation	1	2	3	4	5

4. How can the Third Week Enrollment Analysis be improved? (Format, graphs, new information, etc.)

Please return to *The Office of Institutional Research, Planning & Assessment*. Thank you for your time and effort.